



Killick Way, London, E1

BUTLER & STAG



Smart and well presented two bedroom, third floor apartment, set within this secure modern development in close proximity to Stepney Green Underground. Located on the third floor (with lift) the property comprises a large open plan living, kitchen and dining area with engineered wooden floors and full height windows that generate an abundance of natural light.



- Third Floor Apartment
- Available from 24th August
- Beautifully Presented
- Fitted Bathroom
- Fully Furnished
- Private Balcony
- Two Double Bedrooms
- Modern Kitchen

Available from the 24th of August is this modern spacious two bedroom apartment complete with a private balcony and being finished and furnished to a high standard.

The property is located within equal distance to both Mile End and Stepney Green stations giving easy access into the city and central London.

The apartment comprises of two double bedrooms, a fully fitted modern kitchen, a large living dining area and a fitted bathroom giving light and space throughout.

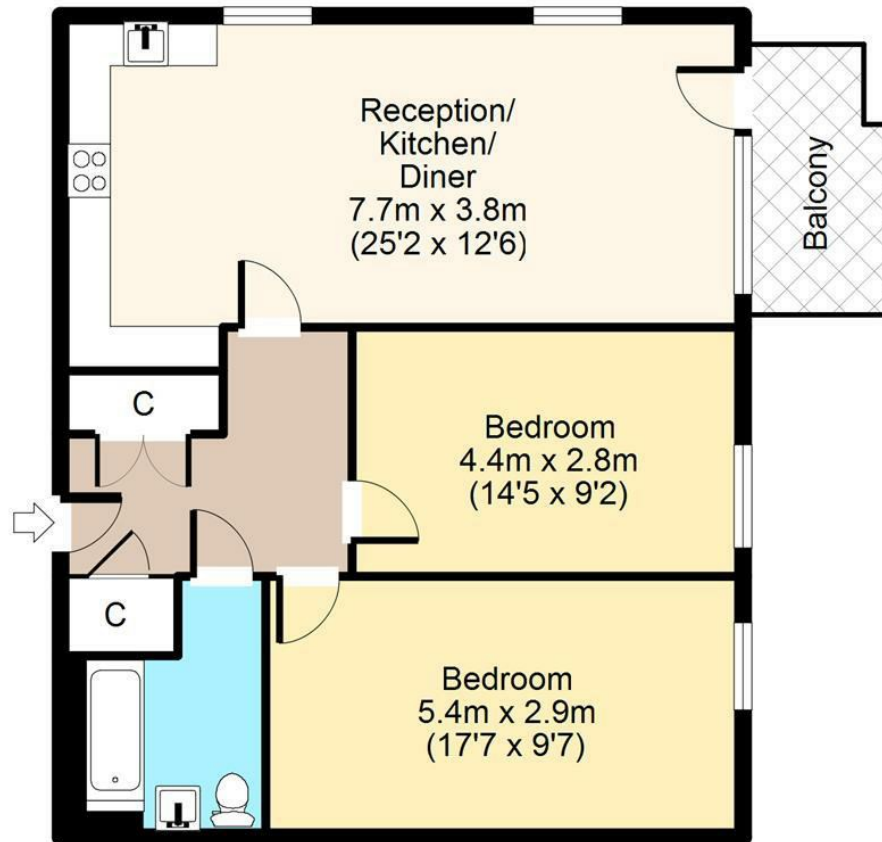






Third Floor

Approx. 71 sq. meters (762 sq. feet)



Total area: approx. 71 sq. meters (762 sq. feet)
For illustration purposes only - not to scale

IMPORTANT NOTICE - These particulars have been prepared in good faith and they are not intended to constitute part of an offer or contract. We have not performed a structural survey on this property and the services, appliances and specific fittings have not been tested. All photographs, measurements, floor plans and distances referred to are given as a guide and should not be relied upon.

BUTLER & STAG

☎ 020 8102 1236

🏠 508 Roman Road, Bow, London, E3 5LU

✉ bow@butlerandstag.com

www.butlerandstag.uk